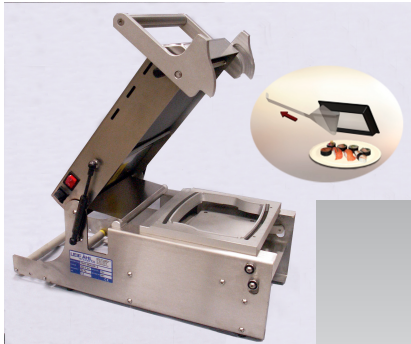
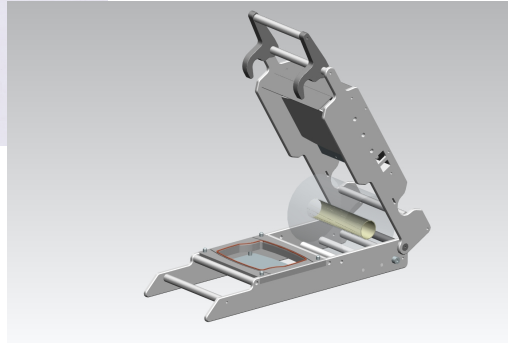


Tray sealers



Model A

Model B



Model E



Model F



Model G

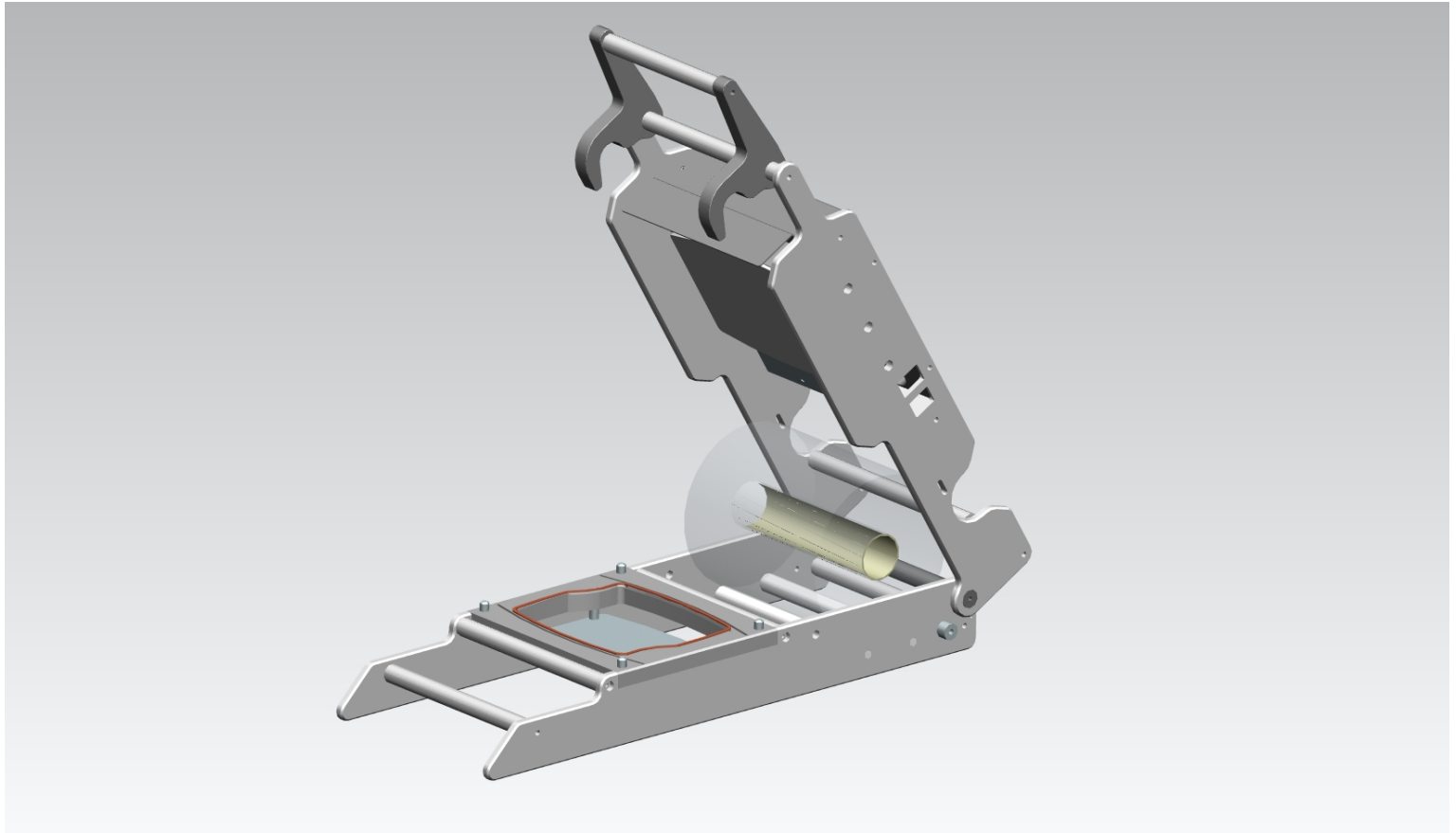


Model D

Tray sealer model A - manual



Tray sealer type B – manual – "DK"



Tray sealer model E and model F

Type E - Manual:

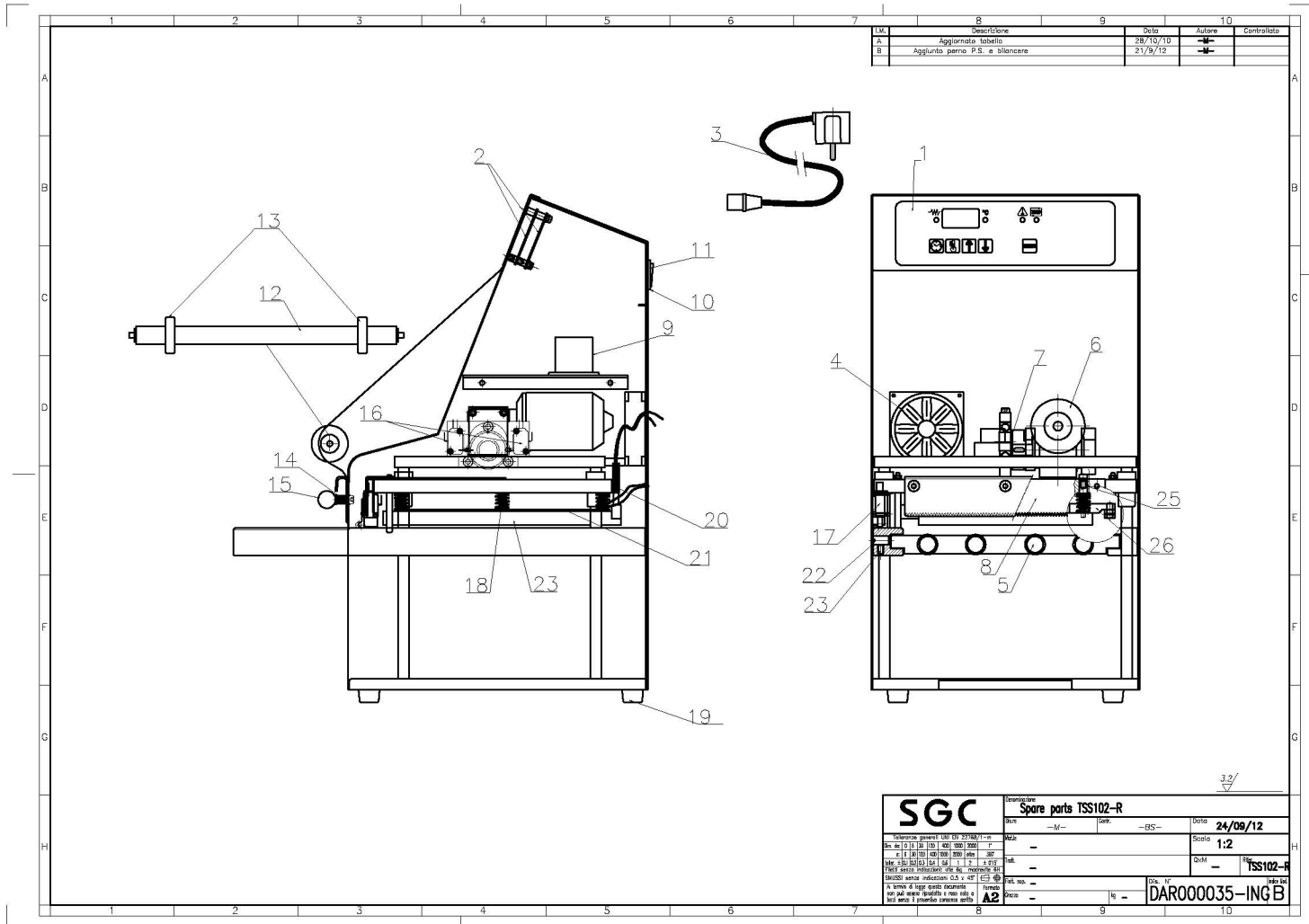
- Simple cut (E-S)
- Full cut (E-F)

Type F – Electric (semi-automatic):

- Simple cut (F-S)
- Simple cut, gas flush (F-S-G)
- Full cut (F-F)
- Full cut, gas flush (F-F-G)



Tray sealer model E and model F



Sealing machine-model E and F

Facts:

- Manufactured in stainless steel and anodised aluminium.
- Teflon covered aluminium sealing plate.
- Equipped with nine memorizable sealing programs.
- Electronic control of sealing plate temperature (0-200 °C).
- Acoustic and shining device of sealing ending.
- Automatic and mechanical sealing cycle is powered only by electric power.
- The sealing cycle begins automatically only when the mould is completely inserted.
- The film reel is placed on the front side of the machine and the unwinding is automatically carried out during the manual mould insertion.

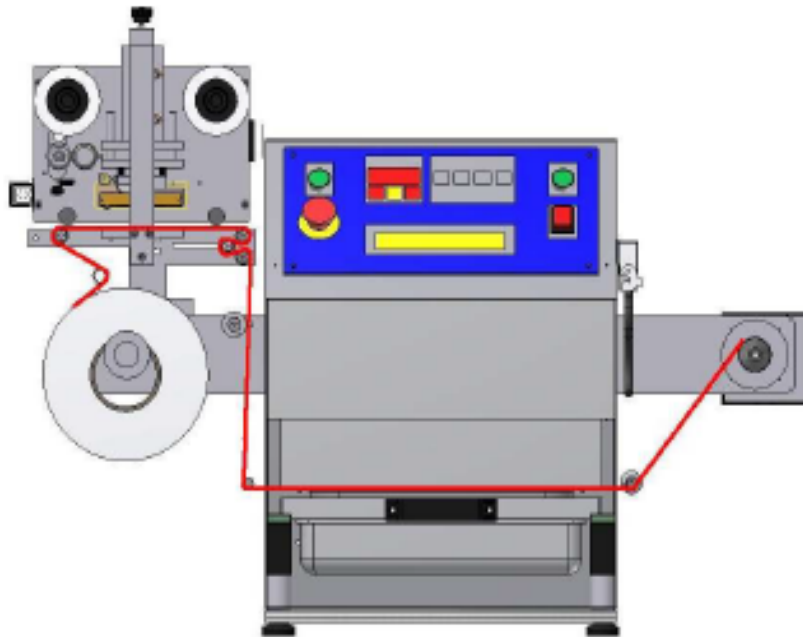
Tray sealer type E - manual



Tray sealer type F – electric – semi aut.



Tray sealer type D – electric/ semi aut. (Vacuum/Gas-injection)



Tray sealer model G – electric/full aut. Vacuum/Gas-injection)



Automatic in-feed system - 2 cavity machine – 18 products per minute

Delivery times – sealing machines

Machine type	Delivery time	Available from	Comments
Type A (tray sealer”	Depend on availability	Now	For renting
Type B (Danish tray sealer)	On stock	November 2013	Only for renting/ lease
Type C	Depend on availability	Now	Only for renting/ lease
Type D	4-6 weeks	Now	For sale
Type E	5 days	End August	For sale
Type F	10 days	End August	For sale
Type G	8-10 weeks	Now	For sale

*Delivery time: Working days – time of shipment from supplier

Lidding film for tray sealers - dimension

Machine (Number)	Number of cavities	Film width	Consumption per cycle and per/tray	Consumption per cycle including waste (mm)	Length of role per box Incl. waste (m)	Length of role to order in m/ for number of boxes
Manual hand seal machine, Type A (50)	1	200		208	150	150/1
Semiautomatic MAP, Type C (3)	2	420		278	100	300/3
Ilpra FP BASIC VG eMEC, Type D (4)	2	265*	370/185	194	140	420/3
Jpack, simple cut (4) TYPE E	1	200	184	193	140	150/1
Jpack, full cut (0) TYPE F	1	200	260	273	197	200/1**
Ilpra FP SPEEDY VG TYPE G	2					
BUNZL (***)	1	165				175/1
<p>* Min film width 265, max film width 320mm.</p> <p>** By keeping stock of 150m roles only, 20 roles would be needed to cover 1 pallet. These machines are not yet TP property, machines in test.</p> <p>*** BUNZL have their own hand machines, this dimension only for BUNZL.</p>						